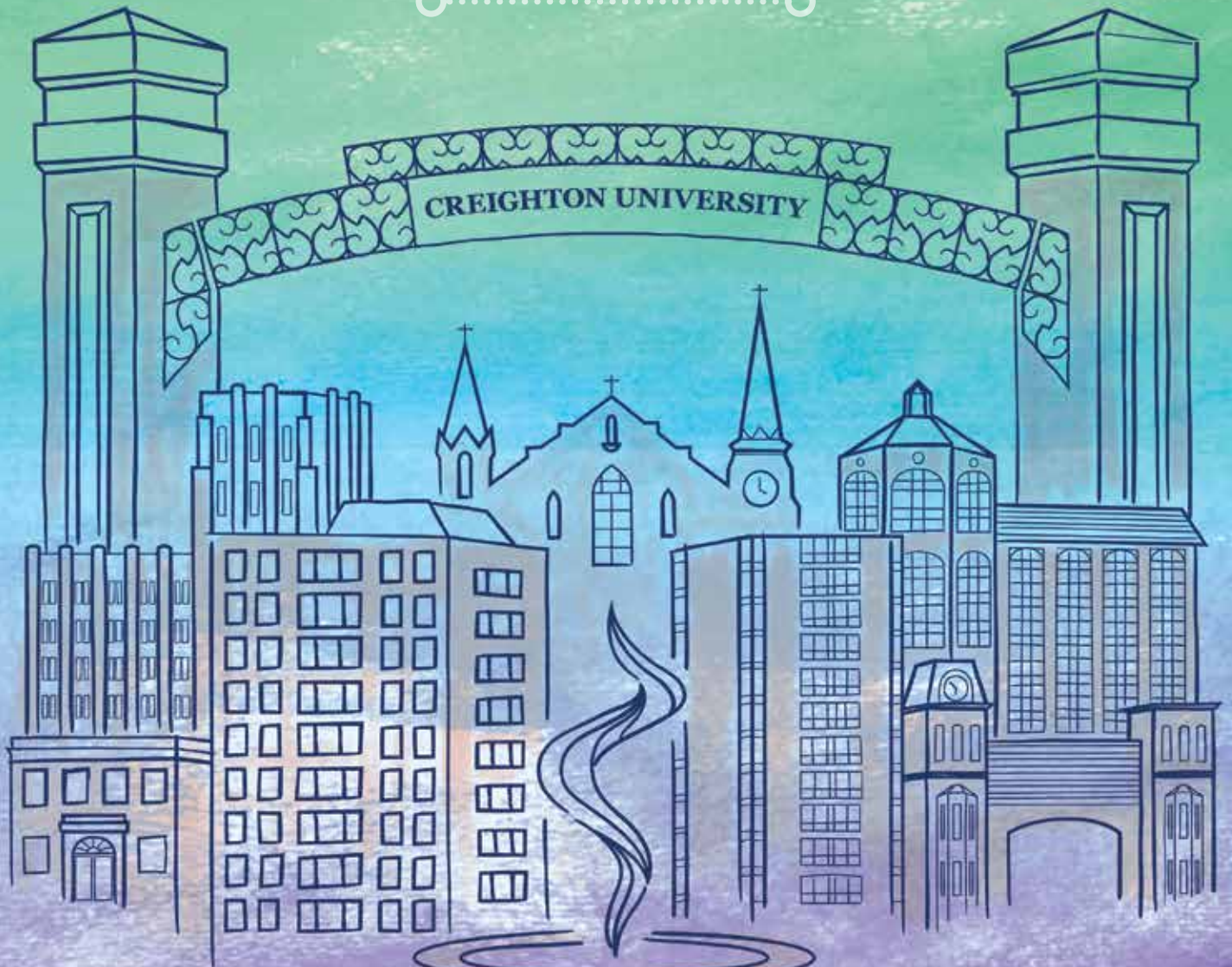
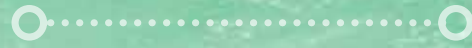


# 2016



# SUMMER SESSIONS

# THINK SUMMER 2016 AT CREIGHTON

Creighton University Summer Sessions offers over 400 courses at a significant tuition discount for summer students. Courses are offered throughout the summer in three week, four week and five week terms. Accelerate your course of study, concentrate on one special course or visit another country! Make summer work for you and still have time for vacation, friends and family!



# IF YOU ARE A STUDENT AT ANOTHER COLLEGE OR UNIVERSITY

There are no admission requirements. Simply check with your school about their course approval process. Save time and money!



Visit us online at [creighton.edu/summersessions](http://creighton.edu/summersessions)  
or contact us at **800.637.4279**

# TABLE OF CONTENTS

<b>2</b>	<b>Calendar &amp; Deadlines</b>	33	Business Administration	38	Physics
<b>6</b>	<b>Student FAQs</b>	33	Business Intelligence & Analytics	38	Political Science
<b>8</b>	<b>Tuition &amp; Fees</b>	34	Chemistry	39	Psychology
<b>10</b>	<b>Summer Admission</b>	34	Chinese	39	Sociology
<b>12</b>	<b>Registration &amp; Enrollment Information</b>	34	Classical and Near Eastern Civilizations	39	Spanish
<b>14</b>	<b>Campus Living</b>	34	Communications	39	Senior Perspective
<b>16</b>	<b>Courses by Sessions Undergraduate</b>	35	College of Professional Studies	39	Theology
<b>22</b>	<b>Flex: Independent Study (ISP)</b>	35	Economics	39	Theatre
<b>24</b>	<b>Magis Common Core Curriculum Courses</b>	35	Education	39	Women's and Gender Studies
<b>26</b>	<b>Magis CCAS Common Core Curriculum Courses</b>	35	Emergency Medical Services		
<b>28</b>	<b>Summer Only Graduate Programs (CSP and IPF)</b>	36	English		
	Detailed Course Listing	36	Environmental Sciences		
32	Accounting	36	Exercise Science		
32	American Studies	36	Finance		
32	Anthropology	36	Graphic Design		
32	Arabic	36	Health Administration & Policy		
32	Art	37	History		
32	Art History	37	Journalism		
33	Asian Studies	37	Leadership		
33	Atmospheric Sciences	37	Management		
33	Biology	37	Marketing		
33	Black Studies	37	Mathematics		
		38	Native American Studies		
		38	Philosophy		

# CALENDAR & DEADLINES

Always check course listings for actual dates. Some courses may not follow the summer calendar. Graduate Terms are managed by individual graduate programs. For dates, please contact the program director.

MAY SESSION 3-Week Term	Last day to register & change courses	Last day to audit or apply for pass /no pass Status	Last day to withdraw	Holiday observed (no classes)	Term End Date
	10 MAY	12 MAY	19 MAY	N/A	25 MAY

MAY 9- MAY 28	MAY							JUNE						
	SU	M	T	W	TH	F	SA	SU	M	T	W	TH	F	SA
	1	2	3	4	5	6	7				1	2	3	4
	8	9	10	11	12	13	14	5	6	7	8	9	10	11
	15	16	17	18	19	20	21	12	13	14	15	16	17	18
	22	23	23	25	26	27	28	19	20	21	22	23	24	25
	29	30	31					26	27	28	29	30		

MAY SESSION 4-Week Term	Last day to register & change courses	Last day to audit or apply for pass /no pass Status	Last day to withdraw	Holiday observed (no classes)	Term End Date
	10 MAY	15 MAY	25 MAY	30 MAY	4 JUNE

MAY 9- JUNE 4	MAY							JUNE						
	SU	M	T	W	TH	F	SA	SU	M	T	W	TH	F	SA
	1	2	3	4	5	6	7				1	2	3	4
	8	9	10	11	12	13	14	5	6	7	8	9	10	11
	15	16	17	18	19	20	21	12	13	14	15	16	17	18
	22	23	23	25	26	27	28	19	20	21	22	23	24	25
	29	30	31					26	27	28	29	30		

JUNE SESSION 3-Week Term	Last day to register & change courses	Last day to audit or apply for pass /no pass Status	Last day to withdraw	Holiday observed (no classes)	Term End Date
	7 JUNE	9 JUNE	16 JUNE	N/A	25 JUNE

JUNE 6- JUNE 25	JUNE							JULY						
	SU	M	T	W	TH	F	SA	SU	M	T	W	TH	F	SA
				1	2	3	4						1	2
	5	6	7	8	9	10	11	3	4	5	6	7	8	9
	12	13	14	15	16	17	18	10	11	12	13	14	15	16
	19	20	21	22	23	24	25	17	18	19	20	21	22	23
	26	27	28	29	30			24	25	26	27	28	29	30
								31						

JUNE SESSION 4-Week Term	Last day to register & change courses	Last day to audit or apply for pass /no pass Status	Last day to withdraw	Holiday observed (no classes)	Term End Date
	7 JUNE	12 JUNE	22 JUNE	N/A	2 July

JUNE 6- JULY 2	JUNE							JULY						
	SU	M	T	W	TH	F	SA	SU	M	T	W	TH	F	SA
				1	2	3	4						1	2
	5	6	7	8	9	10	11	3	4	5	6	7	8	9
	12	13	14	15	16	17	18	10	11	12	13	14	15	16
	19	20	21	22	23	24	25	17	18	19	20	21	22	23
	26	27	28	29	30			24	25	26	27	28	29	30
								31						

JUNE SESSION 5-Week Term	Last day to register & change courses	Last day to audit or apply for pass /no pass Status	Last day to withdraw	Holiday observed (no classes)	Term End Date
	7 JUNE	12 JUNE	27 JUNE	4 July	9 July

JUNE 6- JULY 9	JUNE							JULY						
	SU	M	T	W	TH	F	SA	SU	M	T	W	TH	F	SA
				1	2	3	4						1	2
	5	6	7	8	9	10	11	3	4	5	6	7	8	9
	12	13	14	15	16	17	18	10	11	12	13	14	15	16
	19	20	21	22	23	24	25	17	18	19	20	21	22	23
	26	27	28	29	30			24	25	26	27	28	29	30
								31						

JUNE SESSION 8-Week Term	Last day to register & change courses	Last day to audit or apply for pass /no pass Status	Last day to withdraw	Holiday observed (no classes)	Term End Date
	8 JUNE	19 JUNE	10 JULY	4 JULY	30 JULY

JUNE 6- JULY 30	JUNE							JULY						
	SU	M	T	W	TH	F	SA	SU	M	T	W	TH	F	SA
				1	2	3	4						1	2
	5	6	7	8	9	10	11	3	4	5	6	7	8	9
	12	13	14	15	16	17	18	10	11	12	13	14	15	16
	19	20	21	22	23	24	25	17	18	19	20	21	22	23
	26	27	28	29	30			24	25	26	27	28	29	30
							31							

JULY SESSION 3-Week Term	Last day to register & change courses	Last day to audit or apply for pass /no pass Status	Last day to withdraw	Holiday observed (no classes)	Term End Date
	12 JULY	14 JULY	21 JULY	N/A	30 JULY

JULY 11- JULY 30	JULY							AUGUST						
	SU	M	T	W	TH	F	SA	SU	M	T	W	TH	F	SA
						1	2		1	2	3	4	5	6
	3	4	5	6	7	8	9	7	8	9	10	11	12	13
	10	11	12	13	14	15	16	14	15	16	17	18	19	20
	17	18	19	20	21	22	23	21	22	23	24	25	26	27
	24	25	26	27	28	29	30	28	29	30	31			
31														

JULY SESSION 4-Week Term	Last day to register & change courses	Last day to audit or apply for pass /no pass Status	Last day to withdraw	Holiday observed (no classes)	Term End Date
	12 JULY	17 JULY	27 JULY	N/A	6 AUGUST

JULY 11- AUGUST 6	JULY							AUGUST						
	SU	M	T	W	TH	F	SA	SU	M	T	W	TH	F	SA
						1	2		1	2	3	4	5	6
	3	4	5	6	7	8	9	7	8	9	10	11	12	13
	10	11	12	13	14	15	16	14	15	16	17	18	19	20
	17	18	19	20	21	22	23	21	22	23	24	25	26	27
	24	25	26	27	28	29	30	28	29	30	31			
31														

JULY SESSION 5-Week Term	Last day to register & change courses	Last day to audit or apply for pass /no pass Status	Last day to withdraw	Holiday observed (no classes)	Term End Date
	12 JULY	19 JULY	1 AUGUST	N/A	13 AUGUST

JULY 11- AUGUST 13	JULY							AUGUST						
	SU	M	T	W	TH	F	SA	SU	M	T	W	TH	F	SA
						1	2		1	2	3	4	5	6
	3	4	5	6	7	8	9	7	8	9	10	11	12	13
	10	11	12	13	14	15	16	14	15	16	17	18	19	20
	17	18	19	20	21	22	23	21	22	23	24	25	26	27
	24	25	26	27	28	29	30	28	29	30	31			
31														

CHRISTIAN SPIRITUALITY	Last day to register & change courses	Last day to audit or apply for pass /no pass Status	Last day to withdraw	Holiday observed (no classes)	Term End Date
	TERM 1: June 13 - July 7	14 JUNE	N/A	23 JUNE	4 JULY
TERM 2: July 11 - August 4	12 JULY	N/A	21 JULY	N/A	4 AUGUST

INSTITUTE FOR PRIESTLY FORMATION	Last day to register & change courses	Last day to audit or apply for pass /no pass Status	Last day to withdraw	Holiday observed (no classes)	Term End Date
	MAY SESSION: May 29 - June 3	29 MAY	N/A	N/A	N/A
TERM 1: June 13 - July 8	14 JULY	N/A	17 JUNE	4 JULY	8 JULY
TERM 2: July 11 - July 29	12 JULY	N/A	15 JULY	N/A	29 JULY

\*Dates are subject to change

Graduate Terms are managed by individual graduate programs. For dates, please contact the program director. Please see the Summer School schedule for complete deadline listings.

MAY							JUNE							JULY							AUGUST						
SU	M	T	W	TH	F	SA	SU	M	T	W	TH	F	SA	SU	M	T	W	TH	F	SA	SU	M	T	W	TH	F	SA
1	2	3	4	5	6	7				1	2	3	4						1	2		1	2	3	4	5	6
8	9	10	11	12	13	14	5	6	7	8	9	10	11	3	4	5	6	7	8	9	7	8	9	10	11	12	13
15	16	17	18	19	20	21	12	13	14	15	16	17	18	10	11	12	13	14	15	16	14	15	16	17	18	19	20
22	23	24	25	26	27	28	19	20	21	22	23	24	25	17	18	19	20	21	22	23	21	22	23	24	25	26	27
29	30	31					26	27	28	29	30			24	25	26	27	28	29	30	28	29	30	31			
														31													

# STUDENT FAQS



## How and when can I register for Summer Sessions?

All current Creighton students may begin registering on **Thursday, March 31** at the start of the early registration period for Fall. You'll need to obtain your registration PIN from your advisor to register online on the NEST.

**Visiting students** may begin registering on **Monday, April 11**.

There are four ways to register:

1. Mail: Complete the registration form found at [creighton.edu/summersessions](http://creighton.edu/summersessions) and mail it in
2. Fax: Fax the completed registration form to 402.280.2423
3. Phone: Call 402.280.2424 or toll free 800.637.4279
4. In Person: Visit the Graduate, Adult and Professional Studies and Summer Sessions office in the Eppley Building (College of Arts & Sciences), Room B11

## Who can attend Summer Sessions?

Anyone in good academic standing may enroll in Summer Sessions. Creighton students, interested adults, senior citizens, and students from other colleges and universities are welcome.

## Do I have to be accepted for admission to attend Summer Sessions?

No. However, if you're applying for financial aid for summer, you'll need to apply for admission and be accepted as a degree or certificate-seeking student.

## I'm registered for an online course. How do I access my class?

Your class will be delivered on BlueLine. Information about your online class will be sent to your CUmail account. You'll need your NetID and BLUE password to access these online resources.

The NetID with BLUE account activation instructions for New/Visiting students will be sent to the personal email address collected at the time of registration.

## The course I want requires a prerequisite. Do I have to have it?

Yes. If you have questions about prerequisites, contact the department where the course is taught before you register. In some cases, an equivalent prerequisite may be accepted or you may register with instructor permission.

## Can I still register after classes begin?

Check the calendar and deadlines on pages 2-5 of this Bulletin. Contact the Registrar's Office for late registration.

## When are tuition and/or room and board payments due?

Payment is due by the first day of class for each term.

## Are there out-of-state fees?

No. Creighton University is a private institution. There's no tuition differentiation based on your state of residence.

## Can I apply for financial assistance?

Yes. You must be accepted as a degree or certificate-seeking student at Creighton to receive federal financial assistance. Contact the Creighton Financial Aid Office at 402.280.2731 or [creighton.edu/finaid](http://creighton.edu/finaid).

## How to I obtain my student ID card?

Visit the Card Services office in the Harper Center, Room 1095, Monday-Friday, 8 a.m. - 4:30 p.m, or [creighton.edu/cardservices](http://creighton.edu/cardservices).



## Is parking available on campus?

Yes. You must obtain a parking permit from Public Safety, Jahn Building, 22nd and Burt Streets. The student permit is \$121\* for the entire summer (May 1-August 31), or \$29\* per month for full-time students. If you are a part-time student, the Summer parking permit is half the cost. Evening parking is free but a permit is required. (Evening permits are available in the Summer Sessions Office.) *\*Subject to change*

## Will my Creighton courses transfer?

Yes, in most cases. Check your home campus for transfer guidelines.

## I'm a student from a foreign country and wish to enroll in Summer Sessions. What paperwork is required?

Contact International Programs at 402.280.2221 or [creighton.edu/internationalprograms](http://creighton.edu/internationalprograms)



### OFFICE HOURS

**Graduate, Adult and Professional Studies and Summer Sessions Dean's Office**

Eppley Building, Room B11  
**8:00 A.M. - 4:30 P.M.**

### Graduate Business Programs

Heider College of Business  
Harper Center Room 4011  
**8:00 A.M. - 4:30 P.M.**  
**WED, OPEN UNTIL 6:00 P.M.**

### Registrar's Office

Brandeis Building, Room 202  
(top floor)  
**8:00 A.M. - 4:30 P.M.**

### LIBRARY HOURS

#### Reinert/Alumni Memorial

Contact the library for Summer hours  
Ref Desk: 402.280.2227  
Circ/Reserves: 402.280.2260  
Interlibrary Loan: 402.280.2219  
Please visit  
[reinert.creighton.edu](http://reinert.creighton.edu).

### CAMPUS DINING

Check for the most current summer hours at [creighton.edu/dining](http://creighton.edu/dining).

# TUITION & FEES



## Tuition

Tuition and fees are payable at the time of registration (see Payment Options). Registration is not complete until financial arrangements have been made.

### Summer Sessions 2016 tuition rates per semester hour:

<b>\$705</b>	Undergraduate courses
<b>\$800</b>	Graduate courses
<b>\$1090</b>	Undergraduate Nursing courses (except Accelerated Nursing)
<b>\$800</b>	Graduate Nursing courses
<b>\$400</b>	Eligible teachers*
<b>\$400</b>	Christian Spirituality and Institute for Priestly Formation courses
<b>\$411</b>	CPS Accelerated CREIGHTON
<b>\$422</b>	Online CPS Program
<b>\$545</b>	Auditing courses



## Fees

<b>\$59</b>	University fee
<b>\$99</b>	Technology fee
<b>\$165</b>	Late payment fee per term

Laboratory fees for each course with lab:

<b>\$55 per course to a cap of \$110</b>	a. Applicable for courses with lab (ATE, ATS, BIO, CHM, EVS, EXS, PHY, PSY)
<b>\$20 per course to a cap of \$60</b>	b. College of Business Technology Fee
<b>Summer \$121 Month \$29**</b>	Parking Permit

\* See page 5 for teacher discount and eligibility.

\*\* See Parking on page 8 for more details.

Note: Transcripts and diplomas are released only when all outstanding balances have been paid.

## Withdrawals and Refunds

Students withdrawing before the end of a term will be charged tuition and recurring fees on the basis of the period of attendance from date of enrollment as follows:

### May/June/July Session 3-Week Term

Period of attendance <sup>1</sup>	Percent of rate to be charged
One or two class days	10%
Three-five class days	40%
Six or seven class days	80%
Eight or more class days	100%

### Other Summer Sessions <sup>2</sup>

Period of attendance <sup>1</sup>	Percent of rate to be charged
One or two class days	10%
Three-seven class days	40%
Eight-12 class days	80%
Thirteen or more class days	100%

Non-recurring fees, the University fee, the Technology fee and penalty and special service fees will be charged in full regardless of the period of attendance.<sup>2</sup>

A student will be considered as having withdrawn from the University after two consecutive weeks of unexplained absence. However, this policy is not to be considered as revoking the regulation which requires a student to notify the Dean in person or in writing of this withdrawal. Refunds are made to the student on the basis of the date he/she has formally notified the Dean in person or in writing of his/her withdrawal.



<sup>1</sup> Class day is any day of the term when any class is in session, regardless of whether or not a specific course is scheduled to be held on that day.

<sup>2</sup> The non-recurring, penalty and special service fees include application, university fee, university tech fee, late payment, change of graduate program, graduate aptitude test, challenge examination, special examination/evaluation, recording, tuition remission administrative fee, orientation fee, locker, and thesis binding.

## Tuition Rates for Teachers and School Administrators and those in Ministry

Teachers and school administrators who are employed full time in public or private elementary and secondary schools and persons who work on a consistent full- or part-time basis in specific church ministries may take summer courses at Creighton at a discount of 50 percent off the Spring 2016 per credit hour tuition rate. This discount does not apply to some courses and/or programs. Students must complete an Application for Teacher Improvement Remission or Application for Ministry Remission verifying employment status.

These forms are available in the Business Office, 402.280.2707, in the Graduate, Adult and Professional Studies and Summer Sessions Office, 402.280.2424, or online at [creighton.edu/summersessions](http://creighton.edu/summersessions).

## Financial Aid

University-funded grants and scholarships are generally not available for Summer Sessions. However, Pell Grants and student loans may be available. If you need financial aid for the summer, you are encouraged to contact the Financial Aid Office for application materials. Registration for six or more credit hours over all summer terms is required for minimum eligibility. Applicants must be degree- or certificate-seeking students. The Financial Aid Office is located in the Harper Center, 2nd floor. You may also reach the office by calling 402.280.2731 or email [finaid@creighton.edu](mailto:finaid@creighton.edu).

## Programs for Senior Citizens

Senior Citizens, aged 65 or older, may enroll in a summer course at a no-cost, no-credit, space-available basis. Certain restrictions may apply. Please call the Summer Sessions Office, 402.280.2424, for more information or to register for a course.



## Accessing Your Creighton Student Information

All Creighton students are assigned a unique Network ID (NetID) and a BLUE account. The NetID with BLUE account activation instructions for New and Visiting students will be sent to the personal email address collected at the time of registration. The NetID and BLUE password are required to access all Creighton online resources including NEST (Nearly Every Student Transaction), CEmail and BlueLine.

## Tuition Statements & Payment Options

Creighton does not mail paper tuition statements. Tuition statements are available online on your NEST account. Payment is due by the first day of class of each term. Failure to pay tuition and fees by the appropriate dates will result in the assessment of late fees. Students may submit payment online via NEST, in person at the Business Office at Creighton Hall, Room 113 or by mail.

### The mailing address is

Creighton University, Business Office,  
2500 California Plaza, Omaha, NE 68178.

Students may contact the Business Office, 402.280.2707, with billing questions.

**New/Visiting Students: Contact the Graduate, Adult and Professional Studies and Summer Sessions Office at 402.280.2424 or email [summer@creighton.edu](mailto:summer@creighton.edu) if you do not receive your BLUE account information within two weeks of admission/registration.**



# SUMMER ADMISSION

ALL SUMMER SESSIONS COURSES ARE OPEN TO STUDENTS  
ALREADY ENROLLED IN OR ADMITTED TO CREIGHTON UNIVERSITY  
EITHER AS DEGREE OR CERTIFICATE CANDIDATES OR SPECIAL  
AND VISITING STUDENTS.

## Admission as a Regular Undergraduate Student

Students who are not enrolled in Creighton University but intend to enroll as degree or certificate seeking students may start in Summer Sessions but must apply for admission to the University. The regular application forms will be supplied by the Director of Admissions upon request or online at [admissions.creighton.edu](http://admissions.creighton.edu). Applications and transcripts should be on file with the Admissions Office by May 1, 2016.

All new Creighton students planning to enroll for the 2016 Summer Sessions must complete and submit the Summer Sessions Registration Form included in this Bulletin.

## Visiting Students

Students in good standing at other universities or colleges are welcome to attend Summer Sessions at Creighton.

Complete and return the **Summer Registration Form** found online at [creighton.edu/summersessions](http://creighton.edu/summersessions) or contact the Summer Sessions Office at **402.280.2424**. This form should be filled out as early as possible in accordance with the accompanying instructions.

Students who wish to transfer Creighton earned credits to their home school are responsible for complying with all regulations required for transfer of credit at their home institution.

## Admission to Graduate Courses

Anyone seeking to enter the Graduate School as a candidate for a degree or certificate must file the regular application for admission. Apply online at [gradschool.creighton.edu](http://gradschool.creighton.edu). Applications and credentials files should be completed by May 1, 2016.

Students who wish to pursue graduate study but are not candidates for a degree from Creighton may be admitted to the

Graduate School as special students. A special student application is required and students should consult the program director concerning their readiness.

Any new graduate student planning to enroll for the 2016 Summer Sessions must also complete and submit the **Summer Registration Form**.

# 10

## Admission of International Students

Creighton University welcomes international students from all corners of the world. Students who are not yet enrolled at Creighton University but wish to pursue a degree at Creighton must submit a formal application for admission to the University. To obtain an International Application for Undergraduate Students call **402.280.2221** or send an e-mail to [IntProg@creighton.edu](mailto:IntProg@creighton.edu).

International applicants who wish to enroll in Summer Programs must submit the following documents:

1. A completed Summer Sessions Registration Form, found at [creighton.edu/summersessions](http://creighton.edu/summersessions)
2. Official high school transcripts: The original and a certified English translation
3. Official transcripts from each previous college or university attended: The original and a certified English translation
4. Applicants for whom English is not a native language must take the Test of English as a Foreign Language (TOEFL) and request that the score be sent to Creighton University (Code 6121). A minimum TOEFL score of 80 iBT (213 CBT/550 PBT)

is required. Applicants who do not meet the required TOEFL score may enroll in Creighton's Intensive English Language Institute (IELI).

5. Proof of financial support to cover all expenses associated with Summer School—tuition, fees, room, board, insurance and incidental expenses—must be provided by completing a Certification of Available Finances form and submitting bank statements.
6. Health and Accident Insurance: The University requires all international students to enroll in Creighton's international health and accident insurance plan. No waivers will be accepted.

For more information, call **402.280.2221**, access the website at [creighton.edu/internationalprograms](http://creighton.edu/internationalprograms) or send an e-mail to: [IntProg@creighton.edu](mailto:IntProg@creighton.edu).

*The Summer Session Schedule includes minimal information about the University. For additional information about programs, services, academic and nonacademic policies and regulations, students should consult the Bulletin issue for their school or available online at [creighton.edu/registrar](http://creighton.edu/registrar).*

# 11

# REGISTRATION & ENROLLMENT INFORMATION

## Currently Enrolled Creighton Students

Students enrolled in Creighton University for the 2016 Spring Semester who wish to register for the Summer Sessions may do so by consulting their academic adviser. Currently enrolled students may begin registering for both Fall and Summer courses on-line during the registration period in April.

## Former Creighton and Visiting Students

Students who are not currently enrolled in Creighton University for the 2016 Spring Semester may register for the Summer Sessions by mail, fax, in person, or over the phone. Simply complete the **Summer Registration Form** found at [creighton.edu/summersessions](http://creighton.edu/summersessions) and return it to the Summer Sessions Office.

After your registration has been processed, you will be considered completely registered and liable for all tuition and fees. If you subsequently decide not to attend, you must notify the Registrar's Office in writing in order to avoid tuition charges and possible failing grades.

## Late Registration

Any registration completed after the regular day specified for registration (see Page 2) is a late registration.

## Division of Enrollment

During the Summer Sessions a student will be registered in one of the following divisions depending on the courses or program of study for which he/she is authorized: College of Arts and Sciences, Heider College of Business, School of Nursing, School of Pharmacy and Health Professions, College of Professional Studies or Graduate School.

## Course Loads

Students may register in one, two, or three of the basic components of the Summer Sessions: May Session (3 or 4-week), June Session (3, 4, 5 or 8-week) and July Session (3, 4 or 5-week). The student may earn three semester hours in the May Session and up to six semester hours of graduate or undergraduate credit in each of the two five-week terms (seven semester hours if a laboratory course is taken). No one may earn more than three semester hours of credit in any two-week period.

## Changes in Registration

Changes in registration must be approved by the student's Dean. The deadlines for changing from credit to audit or to apply for pass/no pass status are on pages 2-5.

## Withdrawal

Withdrawal from a course must be for sufficient cause and be made with the approval of the student's Dean.

Students leaving the University before the completion of a term must notify their Dean of their withdrawal in person or in writing at the time of the withdrawal. Refunds are made on the basis of the date of notification. Any student who withdraws from school without giving advance and explicit notice to the Dean of the division in which he or she is enrolled may receive grades of F in all courses (failure for unauthorized withdrawal).

The last day for withdrawing with a "W" from any graduate course, for any reason other than health, is the date of the fourth meeting of the class.

## Auditing a Class

Students will be permitted to register as auditors with the authorization of the Dean. Not all courses are open to auditors. Auditors are not held responsible for the work expected of regular students, are not admitted to examinations, and receive no grade or credit for the course. Regular attendance at class is expected and auditors are subject to being dropped from the course for excessive absences (in this event auditors receive a W).

A student who has previously enrolled as an auditor may not take the course for credit during any succeeding semester or summer term except by special permission of the Dean.

Tuition for courses audited are reduced from the Spring 2016 per-credit hour tuition rate. See the Summer Sessions tuition schedule on Page 4. Special courses, workshops, and institutes offered at a special flat-tuition charge are excluded from the auditor discount.

Students seeking to change from credit to audit status will be eligible for a tuition adjustment (if not otherwise applicable) only if the change is made with the Dean's approval within the period for late registration.

13

13

13

## Attendance

Creighton University's primary obligation is the total education of its students. Implicit in the achievement of this goal will be the student's conscientious attendance of classes and laboratory sessions. Any exception to this norm will be made by the individual instructor for his or her own well-considered reasons.

Each teacher in the undergraduate colleges will, at the start of the term, announce his or her procedures concerning class attendance, verification of excused absences, etc. It is the student's responsibility to note these procedures and to follow them carefully.

Officially excused absences for University-sponsored affairs must be cleared with the student's Dean by the responsible faculty member.



# CAMPUS LIVING

## Summer Residence & Campus Dining

Students will be housed in Kenefick or Heider Hall during Summer Sessions. Kenefick and Heider Hall are multi-story buildings and offer efficiency and one bedroom apartments with a kitchenette and bathroom. They provide a TV lounge, computer lab, vending areas, exercise room, study area, laundry and underground garage. Linen rental packages, including sheets, towels, a pillow and blanket, can be provided for an additional charge. Please contact the Summer Housing Office if you are interested in this service.

Students enrolling in the Christian Spirituality Program (CSP) will be housed in McGloin Hall during Term 1, Term 2, or both. McGloin offers suite-style living in which two students can share two bedrooms, a living area and a bathroom. A linen package, consisting of sheets, towels, a pillow and a blanket, is included in the McGloin housing rate.

All room assignments are based on availability and date application is received. The University reserves the right to assign two individuals to the same room if demand warrants. Coin-operated washers and dryers are available for personal laundry.

Campus dining facilities will be used for Summer Sessions food service. The residence hall provides some vending machine service, which is available at all times. Three meals per day will be served in the dining hall except for Saturdays and Sundays, when only two meals are served.

Meals may be purchased individually or as a meal plan. Visit their website [creighton.edu/dining](http://creighton.edu/dining) for more information on available dining locations.

Three board plans, 19, 14 and 10 meals per week, will be offered during the three standard Summer Sessions. Dining package rates are found on the Summer Housing Application. During the Pre-Session, the two three-week terms and other periods when no board plans are available, dining is available at other campus locations. Visit [creighton.edu/dining](http://creighton.edu/dining) to view hours of operation.

Jaybucks, a debit card account, is a convenient way to pay for meals on a per-use basis. Contact Card Services for more information or visit their website at [creighton.edu/cardservices](http://creighton.edu/cardservices).

## To Make Housing Arrangements

The online Summer Housing Application and Agreement should be used to reserve accommodations. Visit [creighton.edu/ResidenceLife/Housing/SummerHousing](http://creighton.edu/ResidenceLife/Housing/SummerHousing). A non-refundable deposit of \$100.00 is required (except for CSP) with completed application/agreement. Inquiries concerning specific living arrangements should be directed to the Department of Residence Life, Swanson Hall, e-mail [summerhousing@creighton.edu](mailto:summerhousing@creighton.edu) or by phone at **402.280.2717**.

Payment upon arrival will be necessary for all individuals not registered for a Creighton University academic course.

## Student Health Services & Immunization Requirements

Creighton University policy requires that all students registered for on-campus courses and born on or after January 1, 1957 provide documentation of two doses of Measles, Mumps and Rubella vaccine prior to enrollment. The first given 12-15 months of age or later and the second given at 4-6 years of age or later, and at least one month after first does. History of disease is not acceptable. This University Policy is based upon current standards of the Centers for Disease Control. Those who are unable to provide proof of immunity must get a vaccination. The Measles, Mumps, and Rubella immunization is available at Student Health Services. Please call 402.280.2735 to make an appointment. If you have any questions about what constitutes proof of immunity, call Student Health Services.

## Transcripts

A copy of a student's academic record is called a transcript and is issued by the University Registrar upon written request of the student.

You can request your academic transcript online. Through your N.E.S.T. account you can request an official transcript by simply logging in and accessing the Student Records Menu.

Copies are not made of transcripts of records on file from other institutions. Any additional copy of these must be requested by the student, direct from the original issuing institution. For more information visit [creighton.edu/registrar/transcripts](http://creighton.edu/registrar/transcripts).

## Application for Degree

Each candidate for a degree to be conferred at the close of the Summer Sessions must file a formal application for the degree with the Registrar by June 15, 2016. Degrees will be conferred as of August 19, 2016. Diplomas may be picked up at the Registrar's Office after September 1, 2016, or will be sent to the graduate by certified mail. No graduation ceremonies are held during the summer. However, those students who are candidates for degrees at the end of the 2016 Summer Sessions may attend the University Commencement on May 14, 2016. Application deadline to do so is March 15, 2016. NOTE: A student may participate in only one Commencement ceremony for each degree granted.

## Parking

Parking permits are required for anyone parking on campus. Students and program participants who do not have a current permit (valid through August) may purchase a permit from the Department of Public Safety, 2204 Burt Street in the Walt Jahn Building, Monday through Friday, 7:30 a.m. to 7:00 p.m.

A temporary permit can be purchased at the prorated price of \$121 for the entire summer (May 1-August 31), or \$29 per month. If you are a part-time student, Summer parking permit is half the cost. Evening parking is free but a permit is required, which may be obtained in the Summer Sessions Office.



# COURSES BY SESSIONS

## Undergraduate

### May Term

#### DAY

CRN	Sub	Course	Sec	Title
41419	ASN	300	1	Intro to Asian Studies
40584	BIA	253	1	Management Information Systems
41463	BIO	435	1	Coastal and Estuarine Ecology
41010	BIO	481	1	Terrestrial Ecology
40443	BUS	201	1	Legal Environment of Business
41312	CNE	172	1	Muhammad-Muslim Life & Thoughts
41550	CNE	234	1	Epic Literature
40003	COM	314	A	Managerial Communication
41018	ECO	203	1	Introductory Microeconomics
41340	EDU	559	A	Signcant Concepts-Early Chldhd
41341	EDU	560	A	Assess-Observe-Screen-Eval
40039	EMS	411	A	Special Considerations
40040	EMS	413	A	Operations
40041	EMS	415	A	Assessment Based Management
40429	EMS	450	A	Paramedic Certificate
40579	EMS	451	A	Paramedic Transition II
40580	EMS	452	A	Paramedic Transition III
40430	EMS	455	A	Paramedic Clinical Transition
40581	EMS	456	A	Paramedic Clinic Transition II
40582	EMS	457	A	Paramed Clinic Transition III
40006	EMS	460	A	Paramedic Certification
40002	ENG	150	A	Cont Comp: College Composition
41520	ENG	202	1	Entering Professional Dialogue
41464	EVS	435	1	Coastal and Estuarine Ecology
41011	EVS	481	1	Terrestrial Ecology
41294	EXS	125	A	First Aid
41500	GDE	324	1	Digital Foundations for Web
41499	GDE	382	1	Web Design

#### DAY

CRN	Sub	Course	Sec	Title
41333	HIS	272	A	Global Persp: Europe & World
41453	HIS	276	A	Asia & World: Global Perspect
40877	JRM	341	1	Public Relations Writing
40068	MGT	301	1	Mgr Proc & Organiz Behav
41053	MKT	363	1	Global Marketing
41315	PLS	319	1	Politics Of Developing Areas
41316	SRP	481	1	Poverty, Develop and PubPol

#### EVENING

41293	ART	154	N	Clay Modeling I
41465	CPS	400	N	What Matters: Discernment
40081	EMS	101	N	Fundamentals of EMS

#### ONLINE

41050	CNE	171	W	War in Literature
41491	COM	152	W	Civic Engagement
40775	EMS	215	W	Medical Terminology
40845	ENG	150	W1	Cont Comp: College Composition
41336	HIS	275	W	20th Cent as American Century
40777	PHL	457	WA	Biomedical Ethics
41540	PSY	342	WA	Adolescent And Adult Dt
40776	SRP	457	WA	Biomedical Ethics
41300	THL	110	W1	Christian Tradition-Then & Now
41301	THL	110	W2	Christian Tradition-Then & Now
41304	THL	216	W1	Biblical Trad:Human Question
41305	THL	216	W2	Biblical Trad:Human Question
41306	THL	270	W1	Applying Moral Principles
41307	THL	270	W2	Applying Moral Principles

### June Term

#### DAY

CRN	Sub	Course	Sec	Title
40007	ACC	201	A	Intro to Financial Accounting
41471	ACC	313	1	External Fin Report Issues
41049	ARA	111	1	Beginning Arabic Daily Life I
40287	BUS	229	1	Statistical Analysis
40008	CHM	203	A	General Chemistry I
40321	CHM	203	B	General Chemistry I
40317	CHM	204	AA	General Chemistry I Laboratory
40322	CHM	204	BB	General Chemistry I Laboratory
40009	CHM	321	A	Organic Chemistry Lecture I
40323	CHM	321	B	Organic Chemistry Lecture I
40044	CHM	322	AA	Organic Chemistry I Laboratory
40324	CHM	322	BB	Organic Chemistry I Laboratory
40895	CHM	371	1	Biochemistry of Metabolism
41055	EDGE	120	A	Strategies-Academic Success
40797	EDU	503	A	Foundations Of Education
40798	EDU	503	B	Foundations Of Education
40075	EDU	510	1	Growth&Dlopmt of Child
40067	EDU	548	1	Teaching Read Middle & Sec Sch
40072	EDU	551	1	Methods of Instruction-Sec Tch
41501	ENG	171	A	Lit in Life: Literary Autobio
41295	EXS	125	B	First Aid
40887	EXS	331	1	Human Anatomy
41297	EXS	335	1	Exercise Physiology
41332	HIS	272	B	Global Persp: Europe & World
40876	JRM	219	1	Media Writing
40993	PHY	201	A	Gen Physics Life Sciences
40995	PHY	205	LA	General Physics Laboratory I

CRN	Sub	Course	Sec	Title
40996	PHY	205	LB	General Physics Laboratory I
40997	PHY	205	LC	General Physics Laboratory I
40998	PHY	205	LD	General Physics Laboratory I
40883	PLS	315	1	Politics Of Asia
40297	SRP	428	1	Film and the Fine Arts
40789	THR	161	1	Theatre Appreciation
40362	THR	428	1	Film And The Fine Arts



# COURSES BY SESSIONS

## Undergraduate

### June Term

#### EVENING

CRN	Sub	Course	Sec	Title
40790	CHN	111	1	Beginning Chinese Daily Life I
41489	COM	174	1	From Big Brother to Big Data
41475	FIN	325	1	Investment Analysis
41195	MTH	103	N	Intermediate Algebra
40384	MTH	141	N	Applied Calculus
41197	MTH	231	N	Math for Biological Sciences
40282	MTH	245	N	Calculus I
40993	PHY	201	A	Gen Physics Life Sciences
40994	PHY	201	E	Gen Physics Life Sciences
40995	PHY	205	LA	General Physics Laboratory I
40996	PHY	205	LB	General Physics Laboratory I
40997	PHY	205	LC	General Physics Laboratory I
40998	PHY	205	LD	General Physics Laboratory I
40999	PHY	205	LE	General Physics Laboratory I
41000	PHY	205	LF	General Physics Laboratory I

#### ONLINE

CRN	Sub	Course	Sec	Title
41516	ACC	201	W	Intro to Financial Accounting
40076	ACC	366	W	Internships in Accounting
40732	AMS	360	WA	Gender, Society, and Culture
40596	ANT	111	WA1	Intro:Human & Cultural Divrsty
40704	ANT	111	WA2	Intro:Human & Cultural Divrsty
40733	ANT	360	WA	Gender, Society, and Culture
40590	BIA	366	WA	Bus Intell & Anlytcs Intrnshp
40577	BIO	201	WA	General Biology: Org & Pop
41461	BIO	371	WA	Animal Behavior
40073	BUS	366	WA	Business Internships
41051	CNE	230	W	Make 'Em Laugh
41052	COM	101	WA	Digital Communication Lab
41490	COM	101	WC	Digital Communication Lab
41485	COM	320	W	Ldrshp: Theories, Styles & Skills
41492	COM	360	W	Organizational Com Theories
41488	COM	361	W	Interpersonal Communication
41493	COM	478	W	Perspectives-Work Life Balance
40004	COM	496	W	Communication Internships
41467	CPS	200	W	Transition to College
41079	ECO	366	WA	Economics Internship
41486	EDU	320	W	Ldrshp: Theories, Styles, & Skills

#### ONLINE

CRN	Sub	Course	Sec	Title
40846	ENG	150	W2	Cont Comp: College Composition
41502	ENG	225	W	Pirate Lit Thru the Ages
40589	ENT	366	WA	Entrepreneurship Internship
41462	EVS	371	WA	Animal Behavior
40683	EXS	350	W	Nutrition Health & Sports Perf
40005	FIN	301	WA	Managerial Finance
41476	FIN	361	WA	Financial Institutions Mgt
40299	FIN	366	WA	Finance Internship
41468	FRN	111	WA	Beginning French Daily Life I
40445	HAP	485	W	Internship Health Adm & Policy
41062	HIS	274	W	Global Persp: Rights - Revolution
41330	HIS	278	WB1	Islam and the World
41487	ILS	320	W	Leadership & Org Change
41466	ILS	458	W	Organizational Messaging
40557	JRM	365	W	International Mass Commun
40879	JRM	529	W	Law Of Mass Communication
40758	MKT	319	WA	Principles Of Marketing
40300	MKT	366	WA	Marketing Internship
40850	PHL	110	WA1	PhlIdeas: Reality, Knwldg, Good Li
40853	PHL	110	WA2	PhlIdeas: Reality, Knwldg, Good Li
41088	PHL	270	WA1	Philosophical Ethics
40852	PHL	270	WA2	Philosophical Ethics
40854	PHL	320	WA1	God and Persons: Phil Reflect
40855	PHL	320	WA2	God and Persons: Phil Reflect
40780	PHL	457	WB	Biomedical Ethics

CRN	Sub	Course	Sec	Title
41505	PHY	109	W	Introductory Astronomy
41506	PHY	110	W	Astronomy Laboratory
40888	PSY	201	WA	Introductory Psychology
40441	PSY	351	WA	Abnormal Psychology
40756	SOC	101	WA	Intro Sociology:Self & Society
40926	SOC	360	WA	Gender, Society, and Culture
40791	SPN	111	WA	Beginning Spanish Daily Life I
40779	SRP	457	WB	Biomedical Ethics
41494	SRP	478	W	Intersections of Working Life
41308	THL	300	WA1	Ult Q: Jesus Yester & To
41309	THL	300	WA2	Ult Q: Jesus Yester & To
41310	THL	463	WA1	Social Justice-Global Faith Tr
41311	THL	463	WA2	Social Justice-Global Faith Tr



# COURSES BY SESSIONS

## Undergraduate

### July Term

#### DAY

CRN	Sub	Course	Sec	Title
40058	ACC	202	1	Intro to Managerial Accounting
41390	ARH	319	1	Art International
41339	ART	104	1	Elementary School Art
40587	ART	211	1	Introductory Ceramics
40059	CHM	205	A	General Chemistry II
40325	CHM	205	B	General Chemistry II
40060	CHM	206	AA	General Chemistry II Lab
40326	CHM	206	BB	General Chemistry II Lab
40061	CHM	323	A	Organic Chemistry II
40327	CHM	323	B	Organic Chemistry II
40083	CHM	324	AA	Organic Chemistry II Lab
40328	CHM	324	BB	Organic Chemistry II Lab
41313	CNE	231	1	Topics In Arabic Lit in Trnslt
40800	EDU	535	B	Human Relations & Diversity
40024	EDU	583	A	Mgt Prac Classrm Teachers
40371	EDU	583	B	Mgt Prac Classrm Teachers
41296	EXS	125	C	First Aid
40886	EXS	320	1	Human Physiology
41001	PHY	202	A	Gen Phys for Life Sciences II
41003	PHY	206	LA	General Physics Lab II
41004	PHY	206	LB	General Physics Lab II
41005	PHY	206	LC	General Physics Lab II
41006	PHY	206	LD	General Physics Lab II
40446	ACC	201	N	Intro to Financial Accounting

#### EVENING

CRN	Sub	Course	Sec	Title
40690	COM	314	N	Managerial Communication
41080	COM	440	N	Gender Communication
41503	ENG	329	N	Amer Lit/Amer Identity
40435	MTH	139	N	Precalculus
41196	MTH	201	N	Applied Mathematics
40844	MTH	363	N	Elementary Probability Stats
41001	PHY	202	A	Gen Phys for Life Sciences II
41002	PHY	202	E	Gen Phys for Life Sciences II
41003	PHY	206	LA	General Physics Lab II
41004	PHY	206	LB	General Physics Lab II
41005	PHY	206	LC	General Physics Lab II
41006	PHY	206	LD	General Physics Lab II
41007	PHY	206	LE	General Physics Lab II
41008	PHY	206	LF	General Physics Lab II
40837	WGS	440	N	Gender Communication

#### ONLINE

CRN	Sub	Course	Sec	Title
40734	ANT	424	WA	Sustainability & Rural America
41507	ATS	113	W	Intro to Atmospheric Sciences
41009	BIO	202	WB	Gen Bio: Cell & Molec
41459	BIO	310	WB	Biostatistics
41096	BKS	428	WB	Multicultural Issues in Psy
41314	COM	101	WB	Digital Communication Lab
41484	COM	171	W	Friendships-Chngng Social Wrld
40838	COM	390	W	Health Communication
41460	EVS	310	WB	Biostatistics
41469	FRN	112	WB	Beginning French Daily Life II
40839	HAP	390	W	Health Communication
41454	HIS	276	WB	Asia & World: Global Perspect
41331	HIS	278	WB	Islam and the World
40875	JRM	215	W	Intro to Mass Comm Tech
40878	JRM	438	W	Information Ethics
40929	NAS	424	WA	Sustainability & Rural America
40889	PSY	201	WB	Introductory Psychology
40892	PSY	426	WB	Evolutionary Psychology
41095	PSY	428	WB	Multicultural Issues in Psy
41299	PSY	437	WB	Physiological Psychology
41420	SOC	101	WB	Intro Sociology: Self & Society
40931	SOC	424	WA	Sustainability & Rural America
40792	SPN	112	WB	Begin Spanish Daily Life II
41302	THL	215	WB1	Ancestors and Heroes
41303	THL	215	WB2	Ancestors and Heroes
41541	THL	300	WA	Ult Q: Jesus Yester & To
41542	THL	300	WB	Ult Q: Jesus Yester & To



# FLEX: INDEPENDENT STUDY (ISP)

Creighton students are eligible to register for correspondence courses in Creighton's Independent Study Program. These are undergraduate courses that the student can complete at home. Correspondence with the instructor is key to receiving the personalized instruction that is ordinarily given in the traditional classroom.

All ISP courses are developed by Creighton faculty and maintain the same high degree of instructional quality that is maintained in the on-campus courses. They are noted by the "IS" section letters.

Tuition is \$1,266 per course, with the exception of Nursing 223 (2 credits), which is \$844. Textbooks and supplementary materials are additional. Students may register for ISP courses at any time. Do not include these courses on registration forms for Summer 2016. Call the Independent Study Program Office (402-280-2424) for more information or to register. For more information visit [creighton.edu/isp](http://creighton.edu/isp).

CRN	Subj	Course #	Sec #	Title	Instructor
40410	NUR	223	IS	Nutrition	Watson
40507	PSY	111	IS	Introductory Psychology	Schwiesow
40508	PSY	341	IS	Infant and Child Development	Schwiesow



# MAGIS COMMON CORE CURRICULUM COURSES

The Magis Core Curriculum applies to students who enrolled for the 2015-16 academic year or later.

## Core Category A: Foundations

CRN	Subj	Course #	Sec	Title	Term	Length	Type
<b>Foundations: Contemporary Composition</b>							
40002	ENG	150	A	Cont Comp:College Composition	MAY	3-week	On campus
40845	ENG	150	W1	Cont Comp:College Composition	MAY	4-week	Online
40846	ENG	150	W2	Cont Comp:College Composition	JUNE	5-week	Online
<b>Foundations: Critical Issues in Human Inquiry</b>							
41050	CNE	171	W	War in Literature	MAY	4-week	Online
41312	CNE	172	1	Muhammad-Muslim Life &Thoughts	MAY	4-week	On campus
41484	COM	171	W	Friendships-Chngng Social Wrld	JULY	5-week	Online
41489	COM	174	1	From Big Brother to Big Data	JUNE	5-week	On campus
41501	ENG	171	A	Lit in Life:Literary Autbio	JUNE	5-week	On campus
<b>Foundations: Oral Communications</b>							
41052	COM	101	WA	Digital Communication Lab	JUNE	4-week	Online
41314	COM	101	WB	Digital Communication Lab	JULY	4-week	Online
41490	COM	101	WC	Digital Communication Lab	JUNE	4-week	Online
41491	COM	152	W	Civic Engagement	MAY	3-week	Online
<b>Foundations: Mathematical Reasoning</b>							
40384	MTH	141	N	Applied Calculus	JUNE	5-week	On campus
41197	MTH	231	N	Math for Biological Sciences	JUNE	5-week	On campus
40282	MTH	245	N	Calculus I	JUNE	5-week	On campus
<b>Foundations: Philosophical Ideas</b>							
40850	PHL	110	WA1	PhlIdeas: Reality,Knwldg,GoodLi	JUNE	4-week	Online
40853	PHL	110	WA2	PhlIdeas: Reality,Knwldg,GoodLi	JUNE	4-week	Online
<b>Foundations: Christian Tradition</b>							
41300	THL	110	W1	Christian Tradition-Then & Now	MAY	4-week	Online
41301	THL	110	W2	Christian Tradition-Then & Now	MAY	4-week	Online

## Core Category B: Explorations

<b>Explorations: Ethics</b>							
41088	PHL	270	WA1	Philosophical Ethics	JUNE	4-week	Online
40852	PHL	270	WA2	Philosophical Ethics	JUNE	4-week	Online
41306	THL	270	W1	Applying Moral Principles	MAY	4-week	Online
41307	THL	270	W2	Applying Moral Principles	MAY	4-week	Online

## Core Category B: Explorations continued

CRN	Subj	Course #	Sec	Title	Term	Length	Type
<b>Explorations: Global Perspectives in History</b>							
41333	HIS	272	A	Global Persp:Europe & World	MAY	3-week	On campus
41332	HIS	272	B	Global Persp:Europe & World	JUNE	5-week	On campus
41062	HIS	274	W	Global Persp:Rights-Revolution	JUNE	4-week	Online
41336	HIS	275	W	20th Cent as American Century	MAY	4-week	Online
41453	HIS	276	A	Asia & World:Global Perspect	MAY	3-week	On campus
41454	HIS	276	WB	Asia & World:Global Perspect	JULY	4-week	Online
41331	HIS	278	WB	Islam and the World	JULY	4-week	Online
41330	HIS	278	WB1	Islam and the World	JUNE	4-week	Online

<b>Explorations: Literature</b>							
41051	CNE	230	W	Make 'Em Laugh	JUNE	4-week	Online
41313	CNE	231	1	Topics In Arabic Lit in Trnslt	JULY	4-week	On campus
41550	CNE	234	1	Epic Literature	MAY	3-week	On campus
41502	ENG	225	W	Pirate Lit Thru the Ages	JUNE	5-week	Online

<b>Explorations: Biblical Traditions</b>							
41302	THL	215	WB1	Ancestors and Heroes	JULY	4-week	Online
41303	THL	215	WB2	Ancestors and Heroes	JULY	4-week	Online
41304	THL	216	W1	Biblical Trad:Human Question	MAY	4-week	Online
41305	THL	216	W2	Biblical Trad:Human Question	MAY	4-week	Online

<b>Explorations: Understanding Natural Science</b>							
40577	BIO	201	WA	General Biology: Org & Pop	JUNE	5-week	Online
40993	PHY	201	A	Gen Physics Life Sciences	JUNE	5-week	On campus
40994	PHY	201	E	Gen Physics Life Sciences	JUNE	5-week	On campus

<b>Explorations: Understanding Social Science</b>							
40596	ANT	111	WA1	Intro:Human & Cultural Divrsty	JUNE	5-week	Online
40704	ANT	111	WA2	Intro:Human & Cultural Divrsty	JUNE	5-week	Online
40888	PSY	201	WA	Introductory Psychology	JUNE	4-week	Online
40889	PSY	201	WB	Introductory Psychology	JULY	4-week	Online
40756	SOC	101	WA	Intro Sociology:Self & Society	JUNE	5-week	Online
41420	SOC	101	WB	Intro Sociology:Self & Society	JULY	5-week	Online

## Core Category C: Integrations

<b>Magis Integrations: Intersections</b>							
41493	COM	478	W	Perspectives-Work Life Balance	JUNE	N/A	Online
41465	CPS	400	N	What Matters:Discernment	MAY	3-week	On campus
41310	THL	463	WA1	Social Justice-Global Faith Tr	JUNE	5-week	Online
41311	THL	463	WA2	Social Justice-Global Faith Tr	JUNE	5-week	Online

# MAGIS CCAS COMMON CORE CURRICULUM COURSES

CRN	Subj	Course #	Sec	Title	Term	Length	Type
-----	------	----------	-----	-------	------	--------	------

## CCAS Explorations: Fine Arts

41390	ARH	319	1	Art International	JULY	3-week	On campus
41293	ART	154	N	Clay Modeling I	MAY	3-week	On campus
40587	ART	211	1	Introductory Ceramics	JULY	3-week	On campus
41500	GDE	324	1	Digital Foundations for Web	MAY	4-week	On campus
40789	THR	161	1	Theatre Appreciation	JUNE	5-week	On campus

## CCAS Explorations: Foreign Language

41469	FRN	112	WB	Beginning French Daily Life II	JULY	5-week	Online
40792	SPN	112	WB	Begin Spanish Daily Life II	JULY	5-week	Online

## CCAS Integrations: Doing Natural Science

41507	ATS	113	W	Intro to Atmospheric Sciences	JULY	5-week	Online
41009	BIO	202	WB	Gen Bio: Cell & Molec	JULY	5-week	Online
41485	COM	320	W	Ldrshp: Theories, Styles & Skills	JUNE	N/A	Online
41492	COM	360	W	Organizational Com Theories	JUNE	4-week	Online
41488	COM	361	W	Interpersonal Communication	JUNE	N/A	Online
40838	COM	390	W	Health Communication	JULY	4-week	Online
41080	COM	440	N	Gender Communication	JULY	4-week	On campus
41486	EDU	320	W	Ldrshp: Theories, Styles, & Skills	JUNE	N/A	Online
40839	HAP	390	W	Health Communication	JULY	4-week	Online
41487	ILS	320	W	Leadership & Org Change	JUNE	N/A	Online

CRN	Subj	Course #	Sec	Title	Term	Length	Type
-----	------	----------	-----	-------	------	--------	------

## CCAS Integrations: Doing Natural Science continued

41505	PHY	109	W	Introductory Astronomy	JUNE	5-week	Online
41506	PHY	110	W	Astronomy Laboratory	JUNE	5-week	Online
41001	PHY	202	A	Gen Phys for Life Sciences II	JULY	5-week	On campus
41002	PHY	202	E	Gen Phys for Life Sciences II	JULY	5-week	On campus
41003	PHY	206	LA	General Physics Lab II	JULY	5-week	On campus
41004	PHY	206	LB	General Physics Lab II	JULY	5-week	On campus
41005	PHY	206	LC	General Physics Lab II	JULY	5-week	On campus
41006	PHY	206	LD	General Physics Lab II	JULY	5-week	On campus
41007	PHY	206	LE	General Physics Lab II	JULY	5-week	On campus
41008	PHY	206	LF	General Physics Lab II	JULY	5-week	On campus
40837	WGS	440	N	Gender Communication	JULY	4-week	On campus

## CCAS Integrations: Ultimate Questions

40854	PHL	320	WA1	God and Persons: Phil Reflect	JUNE	4-week	Online
40855	PHL	320	WA2	God and Persons: Phil Reflect	JUNE	4-week	Online
41541	THL	300	WA	Ult Q: Jesus Yesterday & Today	JULY	4-week	Online
41308	THL	300	WA1	Ult Q: Jesus Yesterday & Today	JUNE	4-week	Online
41309	THL	300	WA2	Ult Q: Jesus Yesterday & Today	JUNE	4-week	Online
41542	THL	300	WB	Ult Q: Jesus Yesterday & Today	JULY	4-week	Online

2026

2027

# SUMMER ONLY GRADUATE PROGRAMS

Graduate Terms are managed by program director. For dates and courses, please consult your program direction. For our summer residency programs in Christian Spirituality and the Institute for Priestly Formation, please see Terms and Course Listings below.

## Christian Spirituality Program

### JUNE START

CRN	Subj	Course #	Course Title	Credit	Days	Begin	End	Instructor	Location	Room
41442	CSP	660	Dreams And Spiritual Growth	2	MTWRF	1530	1720	Bachman	CRHL	432
40010	CSP	665	Spirit of Diocesan Priesthood	2	MTWR	1530	1730	Brannen	EPLY	210
41437	CSP	669	Salesian Spirituality	1	MTWRFS	0800	0950	Wright	CRHL	432
40856	CSP	670	Art And Spirituality	6	MTWRF	0800	0950	Howard	LECA	302
40700	CSP	676	Giving 19th Annotation Retreat	1	MTWRF	1530	1720	Bachman	CRHL	432
41439	CSP	679	Focusing	1	MTWRFS	0800	0950	Sheehan	CRHL	432
40699	CSP	716	Spirituality of Reconciliation	3	MTWRF	1000	1150	Carney	CRHL	431
40656	CSP	760	Scriptual Fnd Christian Spirit	3	MTWRF	1330	1520	Calef	CRHL	435
41440	CSP	770	Called To Holiness:Christn Voc	3	MTWRF	1000	1150	Wright	CRHL	432
40011	CSP	773	Theology of Spirit Exercises	3	MTWRF	1000	1150	Bachman	CRHL	436
40012	CSP	776	Discernment of Spirits	3	MTWRF	1330	1520	Hauser	CRHL	432
40064	CSP	780	Intro Counseling-Spiritl Dirs	3	MTWRF	1330	1520	Harris	CRHL	431
40022	CSP	781	Pre-Practicum in Spirit Dir	3	MTWRF	1530	1720	McAlpin	CRHL	436
40014	CSP	782	Post-Practicum in Spirit Dir	3	MTWRF	1330	1520	King	CRHL	436
40046	CSP	791	Spirituality and Sexuality	3	MTWRF	1530	1720	Luebbert	CRHL	431

### JULY START

CRN	Subj	Course #	Course Title	Credit	Days	Begin	End	Instructor	Location	Room
40193	CSP	672	True Self/ False Self	1	MTWRFS	1530	1720	Ginn	CRHL	436
41448	CSP	677	Spirituality, Psych-Forgiveness	2	MTWRFS	1530	1720	Luebbert	CRHL	436
41515	CSP	699	Writing for Spirituality	1	MTWRF	0800	0950	Kestermeier	CRHL	435
40544	CSP	718	Theology and Spiritual Conv	3	MTWRF	1000	1150	Zynda	CRHL	436
40862	CSP	760	Scriptual Fnd Christian Spirit	3	MTWRF	1330	1520	Brown	CRHL	431
41444	CSP	761	Litur Fnd Chrstn Spirituality	3	MTWRF	0800	0950	Burke-Sullivan	CRHL	432
40658	CSP	764	Prayer And Christ Spirituality	3	MTWRF	1530	1720	TBD	CRHL	435
40062	CSP	773	Theology of Spirit Exercises	3	MTWRF	1000	1150	TBD	CRHL	435
40063	CSP	776	Discernment of Spirits	3	MTWRF	1530	1720	TBD	CRHL	431
40013	CSP	780	Intro Counseling-Spiritl Dirs	3	MTWRF	0800	0950	Jorgensen	CRHL	436
40074	CSP	781	Pre-Practicum in Spirit Dir	3	MTWRF	0800	0950	TBD	CRHL	431
40065	CSP	782	Post-Practicum in Spirit Dir	3	MTWRF	1330	1520	Zynda	CRHL	432





# SUMMER ONLY GRADUATE PROGRAMS

## Institute for Priestly Formation

CRN	Subj	Course #	Course Title	Credit	Days	Begin	End	Instructor	Location	Room
<b>MAY START</b>										
40932	IPF	501	Christian Prayer And Virtue	2	MTWRF	1800	2030	Toups	RGSB	120
40933	IPF	501	Christian Prayer And Virtue	2	TWRF	0800	1015	Rafferty	EPLY	310
40933	IPF	501	Christian Prayer And Virtue	2	MTWRF	1800	2030	Rafferty	RGSB	120
40934	IPF	501	Christian Prayer And Virtue	2	TWRF	0800	1015	TBD	HLSB	361
40934	IPF	501	Christian Prayer And Virtue	2	MTWRF	1800	2030	TBD	RGSB	120
40935	IPF	501	Christian Prayer And Virtue	2	TWRF	0800	1015	Quagliana	EPLY	107
40935	IPF	501	Christian Prayer And Virtue	2	MTWRF	1800	2030	Quagliana	RGSB	120
40936	IPF	501	Christian Prayer And Virtue	2	TWRF	0800	1015	Hepburn	EPLY	109
40936	IPF	501	Christian Prayer And Virtue	2	MTWRF	1800	2030	Hepburn	RGSB	120
40937	IPF	501	Christian Prayer And Virtue	2	TWRF	0800	1015	Welter	RAML	L10
40937	IPF	501	Christian Prayer And Virtue	2	MTWRF	1800	2030	Welter	RGSB	120
40938	IPF	501	Christian Prayer And Virtue	2	TWRF	0830	1015	TBD	HLSB	246
40938	IPF	501	Christian Prayer And Virtue	2	MTWRF	1800	2030	TBD	RGSB	120
<b>JUNE START</b>										
40017	IPF	502	Human&Spiritual Found: Celibacy	3	MTWRF	0800	1015	Sevcik	HLSB	361
40018	IPF	502	Human&Spiritual Found: Celibacy	3	MTWRF	0800	1015	Quagliana	EPLY	109
40019	IPF	502	Human&Spiritual Found: Celibacy	3	MTWRF	0800	1015	TBD	EPLY	310
40045	IPF	502	Human&Spiritual Found: Celibacy	3	MTWRF	0800	1015	Butler	EPLY	309
40318	IPF	502	Human&Spiritual Found: Celibacy	3	MTWRF	0800	1015	TBD	HLSB	246
40939	IPF	502	Human&Spiritual Found: Celibacy	3	MTWRF	0800	1015	TBD	RAML	L10
40940	IPF	502	Human&Spiritual Found: Celibacy	3	TBD					

CRN	Subj	Course #	Course Title	Credit	Days	Begin	End	Instructor	Location	Room
40020	IPF	503	Spirit of Diocesan Priesthood	2	MTWR	1530	1730	Rafferty	HLSB	G59
40021	IPF	503	Spirit of Diocesan Priesthood	2	MTWR	1500	1700	Kelly	EPLY	109
40021	IPF	503	Spirit of Diocesan Priesthood	2	MTWR	1500	1700	Masters	EPLY	109
40098	IPF	503	Spirit of Diocesan Priesthood	2	MTWR	1530	1730	Hoelsing	HLSB	188
40098	IPF	503	Spirit of Diocesan Priesthood	2	MTWR	1530	1730	Spies	HLSB	188
40285	IPF	503	Spirit of Diocesan Priesthood	2	MTWR	1500	1700	Raia	RAML	L10
40286	IPF	503	Spirit of Diocesan Priesthood	2	MTWR	1530	1730	Welter	HLSB	361
40298	IPF	503	Spirit of Diocesan Priesthood	2	MTWR	1500	1700	Toups	HLSB	246
40360	IPF	503	Spirit of Diocesan Priesthood	2	MTWR	1530	1730	Brannen	EPLY	210
40948	IPF	707	Spirit Exercises	2-5	TBD			TBD	NONE	
40295	IPF	793	Directed Independent Readings	2-5	TBD			TBD	NONE	
<b>JULY START</b>										
40941	IPF	504	The Mystery of the Liturgy	2	MTWRF	0800	1015	Cachia	EPLY	309
40942	IPF	504	The Mystery of the Liturgy	2	MTWRF	0800	1015	Keating	EPLY	109
40943	IPF	504	The Mystery of the Liturgy	2	MTWRF	0800	1015	Gresham	EPLY	210
40944	IPF	504	The Mystery of the Liturgy	2	MTWRF	0800	1015	Kartje	EPLY	310
40945	IPF	504	The Mystery of the Liturgy	2	MTWRF	0800	1015	Rafferty	HLSB	361
40946	IPF	504	The Mystery of the Liturgy	2	MTWRF	0800	1015	Neal	RAML	L10
40947	IPF	504	The Mystery of the Liturgy	2	MTWRF	0800	1015	TBD	HLSB	246
40949	IPF	707	Spirit Exercises	2-5	TBD			TBD	NONE	
40296	IPF	793	Directed Independent Readings	2-5	TBD			TBD	NONE	

30-31

# DETAILED COURSE LISTING

CRN	Subj	Course #	Sec #	Course Title	Credit	Days	Begin	End	Instructor	Location	Room
-----	------	----------	-------	--------------	--------	------	-------	-----	------------	----------	------

## Accounting

JUNE START											
41516	ACC	201	W	Intro to Financial Accounting	3	Online			Flinn		
41471	ACC	313	1	External Fin Report Issues	3	MTWRF	0915	1045	Lewis	HARP	4052
JULY START											
40446	ACC	201	N	Intro to Financial Accounting	3	MR	1745	2145	Flinn	HARP	4052
40058	ACC	202	1	Intro to Managerial Accounting	3	MTWRF	1100	1230	Shimerda	HARP	4053

## American Studies

JUNE START											
40732	AMS	360	WA	Gender, Society and Culture	3	Online			Dilly		

## Anthropology

JUNE START											
40596	ANT	111	WA1	Intro:Human & Cultural Divrsty	3	Online			Fitzgerald		
40704	ANT	111	WA2	Intro:Human & Cultural Divrsty	3	Online			Fitzgerald		
40733	ANT	360	WA	Gender, Society, and Culture	3	Online			Dilly		

## Arabic

JUNE START											
41049	ARA	111	1	Beginning Arabic Daily Life I	4	MTWRF	1000	1215	Al-Hindi	DHHC	212

## Art

MAY START											
41293	ART	154	N	Clay Modeling I	3	MTWRF	1800	1950	Alston	LECA	315
JULY START											
41339	ART	104	1	Elementary School Art	3	MTWRF	1300	1600	Carlson-Pruch	DHHC	B08
40587	ART	211	1	Introductory Ceramics	3	MTWRF	0900	1200	Schroder	LECA	319

## Art History

JULY START											
41390	ARH	319	1	Art International	3	MTWRF	0930	1200	Averett	LECA	104

CRN	Subj	Course #	Sec #	Course Title	Credit	Days	Begin	End	Instructor	Location	Room
-----	------	----------	-------	--------------	--------	------	-------	-----	------------	----------	------

## Asian Studies

MAY START											
41419	ASN	300	1	Intro to Asian Studies	3	MTWRF	0930	1230	Jiang	DHHC	11

## Atmospheric Sciences

JULY START											
41507	ATS	113	W	Intro to Atmospheric Sciences	3	Online			Schrage		

## Biology

JUNE START											
40577	BIO	201	WA	General Biology: Org & Pop	3	Online			Cullum		
41461	BIO	371	WA	Animal Behavior	3	Online			Burk		
JULY START											
41009	BIO	202	WB	Gen Bio: Cell & Molec	3	Online			Reedy		
41459	BIO	310	WB	Biostatistics	4	Online			Cullum		

## Black Studies

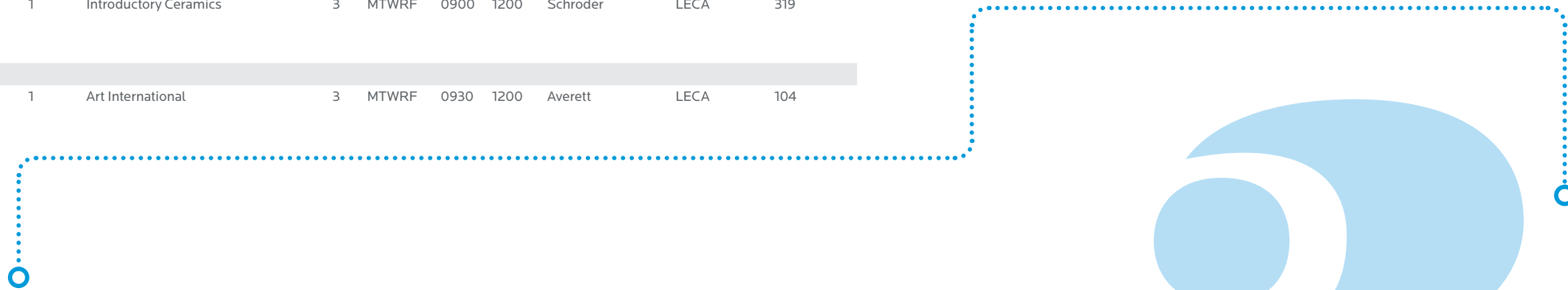
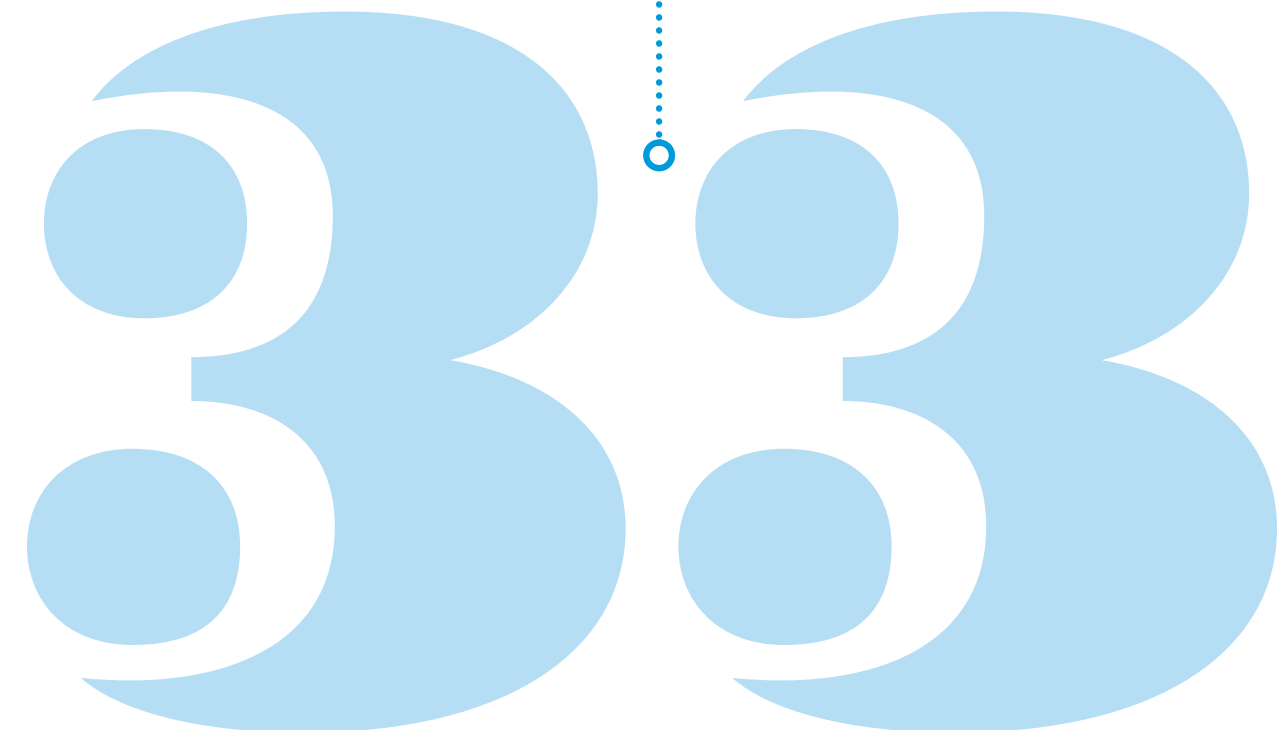
JULY START											
41096	BKS	428	WB	Multicultural Issues in Psy	3	Online			Budesheim		

## Business Administration

MAY START											
40443	BUS	201	1	Legal Environment of Business	3	MTWRF	0900	1200	McNary	HARP	3040
JUNE START											
40287	BUS	229	1	Statistical Analysis	4	MTWR	0900	1200	Duckworth	HARP	4010

## Business Intelligence & Analytics

MAY START											
40584	BIA	253	1	Management Info Systems	3	MTWRF	0900	1200	Corritore	HARP	3033



CRN	Subj	Course #	Sec #	Course Title	Credit	Days	Begin	End	Instructor	Location	Room
-----	------	----------	-------	--------------	--------	------	-------	-----	------------	----------	------

### Chemistry

<b>JUNE START</b>											
40008	CHM	203	A	General Chemistry I	3	MTWRF	0800	0930	Freitag	HLSB	244
40321	CHM	203	B	General Chemistry I	3	MTWRF	1245	1415	Anderson	HLSB	244
40317	CHM	204	AA	General Chemistry I Laboratory	2	MWF	0945	1230	Gunn	RGSB	121
40322	CHM	204	BB	General Chemistry I Laboratory	2	MWF	0945	1230	Gunn	RGSB	121
40009	CHM	321	A	Organic Chemistry Lecture I	3	MTWRF	0915	1045	Fletcher/Gross	HLSB	188
40323	CHM	321	B	Organic Chemistry Lecture I	3	MTWRF	0915	1045	Fletcher/Gross	HLSB	188
40044	CHM	322	AA	Organic Chemistry I Laboratory	1	TWR	1230	1520	Ali	HLSB	188
40324	CHM	322	BB	Organic Chemistry I Laboratory	1	TWR	1230	1520	Ali	RGSB	112
40895	CHM	371	1	Biochemistry of Metabolism	3	MTWRF	1000	1150	Haas	EPLY	107

<b>JULY START</b>											
40059	CHM	205	A	General Chemistry II	3	MTWRF	0800	0930	Dobberpuhl	HLSB	244
40325	CHM	205	B	General Chemistry II	3	MTWRF	0800	0930	Dobberpuhl	HLSB	244
40060	CHM	206	AA	Gen Chemistry Laboratory II	1	MWF	0945	1230	TBD	RGSB	121
40326	CHM	206	BB	General Chemistry II Lab	1	MWF	0945	1230	TBD	RGSB	121
40061	CHM	323	A	Organic Chemistry II	3	MTWRF	0915	1045	Ali/Miller	HLSB	188
40327	CHM	323	B	Organic Chemistry II	3	MTWRF	0915	1045	Ali/Miller	HLSB	188
40083	CHM	324	AA	Organic Chemistry II Lab	1	TWR	1230	1520	Ali	HLSB	188
40328	CHM	324	BB	Organic Chemistry II Lab	1	TWR	1230	1520	Ali	RGSB	112

### Chinese

<b>JUNE START</b>											
40790	CHN	111	1	Beginning Chinese Daily Life I	4	MTWRF	1500	1900	Jiang	HCCA	111A

### Classical and Near Eastern Civilizations

<b>MAY START</b>											
41050	CNE	171	W	War in Literature	3	Online			Habash		
41312	CNE	172	1	Muhammad-Muslim Life &Thoughts	3	MTWRF	1000	1225	Al-Hindi	DHHC	212
41550	CNE	234	1	Epic Literature	3	MTWRF	0930	1230	Clark	DHHC	B01

<b>JUNE START</b>											
41051	CNE	230	W	Make 'Em Laugh	3	Online			Habash		

<b>JULY START</b>											
41313	CNE	231	1	Topics In Arabic Lit in Trnslt	3	MTWRF	1000	1225	Al-Hindi	DHHC	212

### Communications

<b>MAY START</b>											
41491	COM	152	W	Civic Engagement	1	Online			Birkholt		
40003	COM	314	A	Managerial Communication	3	MTWRF	TBD	TBD	Leighter		

<b>JUNE START</b>											
41052	COM	101	WA	Digital Communication Lab	1	Online			Shuler		
41490	COM	101	WC	Digital Communication Lab	1	Online			McHendry		
41489	COM	174	1	From Big Brother to Big Data	3	TR	1745	2145	McHendry	DHHC	302
41485	COM	320	W	Ldrshp: Theories,Styles&Skills	3	Online			Shuler		
41492	COM	360	W	Organizational Com Theories	3	Online			Gill		
41488	COM	361	W	Interpersonal Communication	3	Online			Gill		
41493	COM	478	W	Perspectives--Work Life Balance	3	Online			Kirby		
40004	COM	496	W	Communication Internships	3	Online			Shuler		

<b>JULY START</b>											
41314	COM	101	WB	Digital Communication Lab	1	Online			Gill		
41484	COM	171	W	Friendships-Chngng Social Wrld	3	Online			Gill		
40690	COM	314	N	Managerial Communication	3	MW	1745	2145	Gill	DHHC	11
40838	COM	390	W	Health Communication	3	Online			Birkholt		
41080	COM	440	N	Gender Communication	3	TR	1745	2145	McHendry	DHHC	302

CRN	Subj	Course #	Sec #	Course Title	Credit	Days	Begin	End	Instructor	Location	Room
-----	------	----------	-------	--------------	--------	------	-------	-----	------------	----------	------

### College of Professional Studies

<b>MAY START</b>											
41465	CPS	400	N	What Matters:Discernment	3	MR	1745	2145	Kirby	HCCA	108

<b>JUNE START</b>											
41467	CPS	200	W	Transition to College	3	Online			Kirby		

### Economics

<b>MAY START</b>											
41018	ECO	203	1	Introductory Microeconomics	3	MTWRF	0900	1200	Wingender	HARP	3035

### Education

<b>MAY START</b>											
41340	EDU	559	A	Signcant Concepts-Early ChldhD	6	MTWRF	0800	1100	Hearn	DHHC	301
41341	EDU	560	A	Assess-Observe-Screen-Eval	6	MTWRF	1200	1300	Hearn	DHHC	301

<b>JUNE START</b>											
41486	EDU	320	W	Ldrshp:Theories,Styles,&Skills	3	Online			Shuler		
40797	EDU	503	A	Foundations Of Education	2	WRF	0900	1500	TBD	EPLY	423
40798	EDU	503	B	Foundations Of Education	2	WRF	0900	1500	McClure	EPLY	424
40075	EDU	510	1	Growth&Developmnt of Child	6	MTWR	1300	1600	Dicket	EPLY	309
40067	EDU	548	1	Teaching Read Middle & Sec Sch	3	MTWR	0900	1200	Olson	EPLY	312
40072	EDU	551	1	Methods of Instruction-Sec Tch	3	MTWR	1300	1600	Engel	EPLY	424

<b>JULY START</b>											
40800	EDU	535	B	Human Relations & Diversity	3	MTWR	1300	1600	Wellman-High Horse	EPLY	423
40024	EDU	583	A	Mgt Prac Classrm Teachers	6	MTWR	0900	1200	TBD	DHHC	B08
40371	EDU	583	B	Mgt Prac Classrm Teachers	6	MTWR	0900	1200	Houtz	EPLY	423

### Emergency Medical Services

<b>MAY START</b>											
40081	EMS	101	N	Fundamentals of EMS	8	TR	1800	2200	Carritt	OGYM	139
40775	EMS	215	W	Medical Terminology	2	Online			Bergjord		
40039	EMS	411	A	Special Considerations	3	TR	0830	1230	Leggio	OGYM	L14
40039	EMS	411	A	Special Considerations	3	M	0830	1630	Leggio	OGYM	L14
40040	EMS	413	A	Operations	2	TR	0830	1230	Leggio	OGYM	L14
40040	EMS	413	A	Operations	2	M	0830	1630	Leggio	OGYM	L14
40041	EMS	415	A	Assessment Based Management	1	TR	0830	1230	Leggio	OGYM	L14
40429	EMS	450	A	Paramedic Certificate		TBD			Miller		
40579	EMS	451	A	Paramedic Transition II		TBD			Miller		
40580	EMS	452	A	Paramedic Transition III		TBD			Miller		
40430	EMS	455	A	Paramedic Clinical Transition		TBD			Miller		
40581	EMS	456	A	Paramedic Clinic Transition II		TBD			Miller		
40582	EMS	457	A	Paramed Clinic Transition III		TBD			Miller		
40006	EMS	460	A	Paramedic Certification	6	TBD			Miller		



CRN	Subj	Course #	Sec #	Course Title	Credit	Days	Begin	End	Instructor	Location	Room
-----	------	----------	-------	--------------	--------	------	-------	-----	------------	----------	------

## English

MAY START											
40002	ENG	150	A	Cont Comp: College Comp	3	MTWRF	0900	1200	Dornsife	CRHL	431
40845	ENG	150	W1	Cont Comp: College Comp	3	Online			Whipple		
JUNE START											
40846	ENG	150	W2	Cont Comp: College Composition	3	Online			Rettig		
41501	ENG	171	A	Lit in Life: Literary Autobio	3	MTWR	1300	1550	Cooper	EPLY	113
41502	ENG	225	W	Pirate Lit Thru the Ages	3	Online			Kowalke		
JULY START											
41503	ENG	329	N	Amer Lit/Amer Identity	3	MTWRF	1800	1945	Zacharias	CRHL	431

## Environmental Sciences

JUNE START											
41462	EVS	371	WA	Animal Behavior	3	Online			Burk		
JULY START											
41460	EVS	371	WB	Biostatistics	4	Online			Cullum		

## Exercise Science

MAY START											
41294	EXS	125	A	First Aid	2	MTWRF	0900	1030	Conway	KFCR	145
JUNE START											
41295	EXS	125	B	First Aid	2	MTWRF	0900	1030	Conway	KFCR	145
40887	EXS	331	1	Human Anatomy	4	MTWRF	0800	1200	Katsavelis	KFCR	148
41297	EXS	335	1	Exercise Physiology	4	TR MWF	1300 1300	1430 1500	Bredahl	OGYM	L02
40683	EXS	350	W	Nutrition Health & Sports Perf	3	Online			Zuniga		
JUNE START											
41296	EXS	125	C	First Aid	2	MTWRF	0900	1030	Conway	KFCR	145
40886	EXS	320	1	Human Physiology	4	MTWRF MWF	1200 1331	1330 1500	Lambert	KFCR	145 150

## Finance

JUNE START											
40005	FIN	301	WA	Managerial Finance	3	Online			Wells		
41475	FIN	325	1	Investment Analysis	3	MTWR	1745	2045	Olson	HARP	2084
41476	FIN	361	WA	Financial Institutions Mgt	3	Online			Washer		

## French

JUNE START											
41468	FRN	111	WA	Beginning French Daily Life I	4	Online			Johnston		
JULY START											
41469	FRN	112	WB	Beginning French Daily Life II	4	Online			Johnston		

## Graphic Design

MAY START											
41500	GDE	324	1	Digital Foundations for WeB	3	MTWRF	1300	1600	Kalk	HCCA	205
41499	GDE	382	1	Web Design	3	MTWRF	0900	1200	Myers	HCCA	204

## Health Administration & Policy

JUNE START											
40445	HAP	485	W	Internship Health Adm & Policy	3	Online			Walsh		
JULY START											
40839	HAP	390	W	Health Communication	3	Online			Birkholt		

CRN	Subj	Course #	Sec #	Course Title	Credit	Days	Begin	End	Instructor	Location	Room
-----	------	----------	-------	--------------	--------	------	-------	-----	------------	----------	------

## History

MAY START											
41333	HIS	272	A	Global Persp: Europe & World	3	MTWR	1300	1545	Eastman	DHHC	212
41336	HIS	275	W	20th Cent as American Century	3	Online			Fryer		
41453	HIS	276	A	Asia & World: Global Perspect	3	MTWRF	0900	1200	Hawkins	DHHC	13
JUNE START											
41332	HIS	272	B	Global Persp: Europe & World	3	MTWRF	0915	1045	McEwen	DHHC	13
41062	HIS	274	W	Global Persp: Rights-Revolution	3	Online			Elliot-Meisel		
41330	HIS	278	WB1	Islam and the World	3	Online			Calvert		
JULY START											
41454	HIS	276	WB	Asia & World: Global Perspect	3	Online			Hawkins		
41331	HIS	278	WB	Islam and the World	3	Online			Calvert		

## Journalism

MAY START											
40877	JRM	341	1	Public Relations Writing	3	MTWRF	0900	1200	Wirth	EPLY	110
JUNE START											
40876	JRM	219	1	Media Writing	3	MTWRF	1100	1400	Johnson	HCCA	204
40557	JRM	365	W	International Mass Commun	3	Online			Zuegner		
40879	JRM	529	W	Law Of Mass Communication	3	Online			Maciejewski		
JULY START											
40875	JRM	215	W	Intro to Mass Comm Tech	2	Online			Johnson		
40878	JRM	438	W	Information Ethics	3	Online			Maciejewski		

## Leadership

JUNE START											
41487	ILS	320	W	Leadership & Org Change	3	Online			Shuler		
41466	ILS	458	W	Organizational Messaging	3	Online			Kirby		

## Management

JULY START											
40068	MGT	301	1	Mgr Proc & Organiz Behav	3	MTWRF	0900	1200	Darnold	HARP	4052

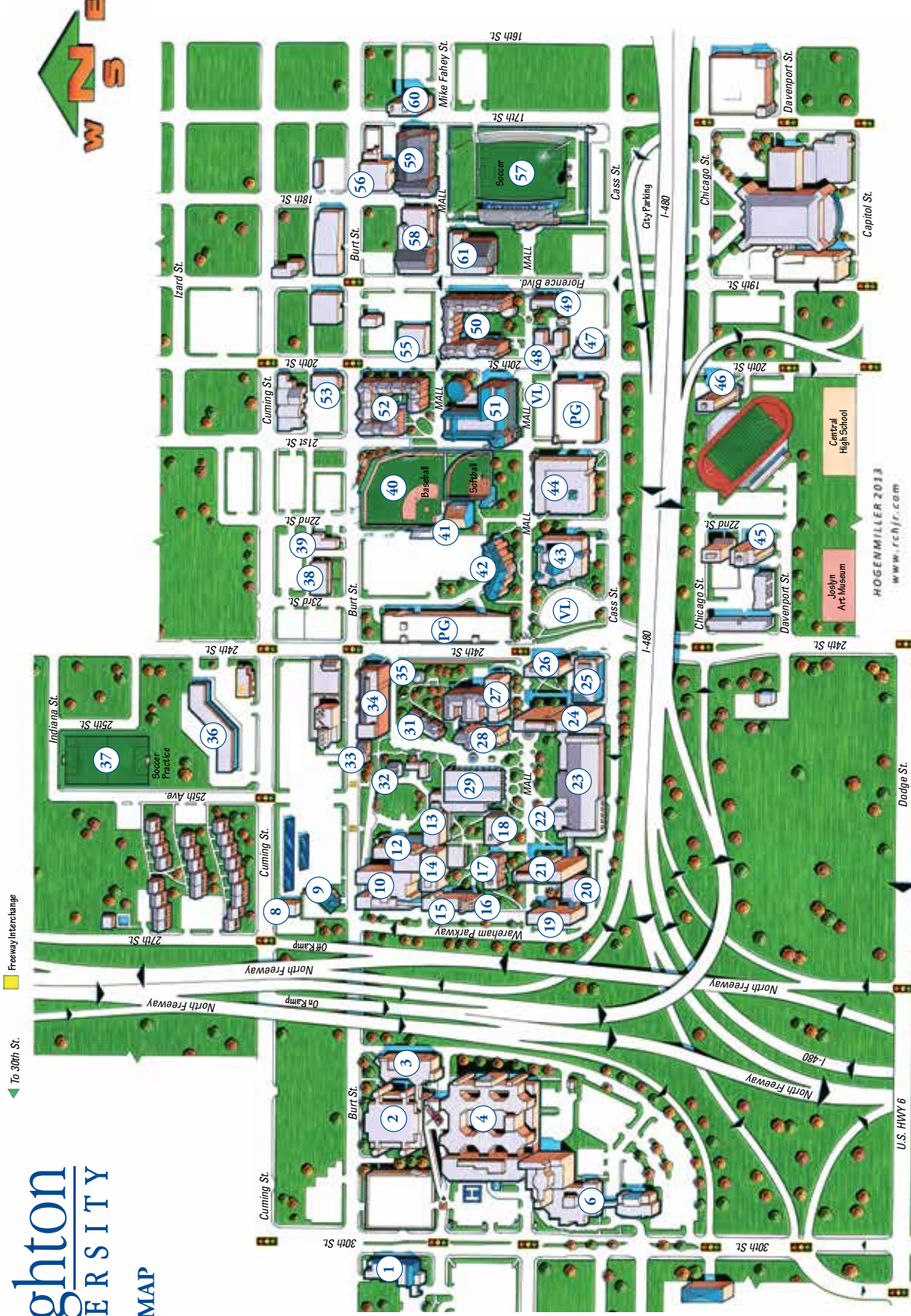
## Marketing

MAY START											
41053	MKT	363	1	Global Marketing	3	MTWRF	0900	1200	Wachner	HARP	4053
JUNE START											
40758	MKT	319	WA	Principles of Marketing	3	Online			McMahon		

## Mathematics

JUNE START											
41195	MTH	103	N	Intermediate Algebra	3	MW	1700	2100	Lilly	EPLY	312
40384	MTH	141	N	Applied Calculus	3	TR	1700	2100	Mallenby	EPLY	310
41197	MTH	231	N	Math for Biological Sciences	3	MW	1700	2100	Nielsen	EPLY	309
40282	MTH	245	N	Calculus I	4	MTR	1700	2030	Malik	EPLY	107
JULY START											
40435	MTH	139	N	Precalculus	3	MW	1700	2100	Carlson	EPLY	310
41196	MTH	201	N	Applied Mathematics	3	MW	1700	2100	Cheng	EPLY	309
40844	MTH	363	N	Elementary Probability Stats	6	TR	1700	2100	Cheng	EPLY	300





Alegent Creighton Health  
 Creighton University Medical Center - **4**  
 Becker Hall - **20**  
 Beirne Research Tower - **16**  
 Bio-Information Center - **3**  
 Boyne Building, Dr. Harry H. & Maude - **2**  
 Boys Town National Research Hospital - **6**  
 Brandeis Hall, Mary Rodgers - **25**  
 Campion House - **49**  
 Cardiac Center - **1**  
 Championship Center - **61**  
 Creighton Hall (Administration Bldg) - **27**  
 Criss I - **15**

Criss Health Sciences Building,  
 Dr. C.C. and Mabel L. - **10**  
 Davis Square - **52**  
 Degman Hall, Fr. Francis - **26**  
 Dowling Hall (Humanities) - **17**  
 Eppley Bldg, Eugene C. - **13**  
 Gallagher Hall - **19**  
 Greenhouse, Susan Tracy Stuppy - **32**  
 Harper Center, Mike and Josie and  
 the Heider College of Business - **51**  
 Health Policy and Ethics - **9**  
 Heider Hall - **45**  
 Hitchcock (Comm Arts) - **18**  
 Hixson-Lied Science Building - **12**

Ignatius House - **31**  
 Jahn Building, Walther R. - **39**  
 Jelinek Building, Frank T. - **56**  
 Kellom Heights Shopping Center - **36**  
 Kenefick Hall - **46**  
 Kiewit Hall - **21**  
 Kiewit Physical Fitness Center - **23**  
 Kirby Gaughan Pavilion - **41**  
 Labaj Building, Fr. Joseph - **48**  
 Law School, Ahmanson School of Law - **44**  
 Lied Education Center for the Arts - **43**  
 Linn Building, Fr. Henry - **47**  
 Markkoe Hall - **33**  
 McGloin Hall, Fr. Richard D. - **42**

Military Science (Army ROTC) - **8**  
 Morrison Stadium, S.J., Michael G. - **57**  
 Murphy Building, Edward D. - **55**  
 Observatory - **35**  
 Old Gymnasium,  
 Joseph J. Vinardi Athletic Center - **34**  
 Opus Hall - **50**  
 Pittman Building, Judge Elizabeth D. - **53**  
 Rasmussen Fitness and Sports Center - **59**  
 Reinert Alumni Memorial Library - **29**  
 Rigge Science Building - **14**  
 Ryan Athletic Center/D.J. Sokol Arena - **58**  
 Saint John's Church - **28**  
 Schneider Hall - **38**

Soccer Practice Field - **37**  
 Sports Complex - **40**  
 Student Center, V.J. and Angela Skurr - **22**  
 Swanson Hall, W. Clarke - **24**  
 Wareham Building - **60**

Parking Garage - **PG**  
 Visitors Lot - **VL**  
 Admissions - **51**  
 Human Resources - **38**  
 University Relations - **60**

SEE  
 YOU THIS  
 SUMMER!!

**Creighton**  
UNIVERSITY

Summer Sessions  
2500 California Plaza  
Omaha, NE 68178

Non-Profit Org.  
U.S. Postage  
**PAID**  
Permit No. 227  
Omaha, NE 68178

# SUMMER SESSIONS

○..... **2016** .....○