



# ALL THINGS IGNATIAN

Celebrating Mission at Creighton University



CREIGHTON UNIVERSITY  
**Teaching and Learning Center**  
Supporting Excellence in Learning and Innovative Pedagogy

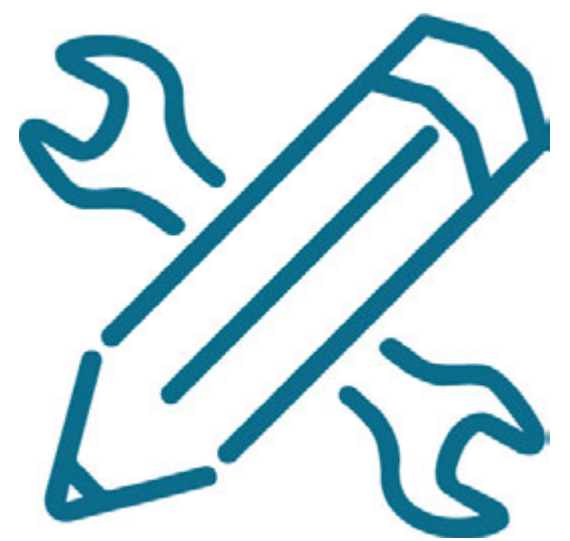
## Team TLC

[Instructional Designers, Exam Developers, Media Designer, and  
Assessment and Faculty Development Specialists]

partners with faculty and staff to enhance Creighton’s  
teaching and learning mission to serve students.  
We support enacting the Jesuit charisms of *Cura  
Personalis, Magis, Men and Women for and With  
Others*, and *Reflection and Discernment* by:



**Consulting and Collaborating**  
with faculty to enhance Creighton’s teaching and learning  
mission to education students



**Engaging**  
faculty-led assessment process to enhance student’s  
achievement of goals and outcomes established by  
Creighton’s programs



**Creating**  
innovative and integrated forms of teaching together with  
reflective practices

“...we want educators who are alive and awake, who own and relish the most important work in the world, who understand what it means to *‘teach with fire.’* We need teachers and administrators who are listeners and learners, poets and storytellers, people who can draw out, lift up, lead and follow.”

-Palmer & VanderArk (2003,p. xxiv)

### Community of Faculty Scholars Faculty Development Opportunities:

- Distinguished Educator in Teaching-as-Scholarship Award
- Time-Out-for-Lunch Programs
- Faculty Development Grants
- Faculty Associates Program



**Contact:**  
Mary Emmer, MS  
Program Manager  
Teaching & Learning Center  
Reinert Alumni Library  
Suite L33 | Office L36  
402.280.4779  
[maryemmer@creighton.edu](mailto:maryemmer@creighton.edu)

### Assessment of Student Learning Learn more about:

- Assessing your courses & programs,
- Tackling TaskStream,
- Providing peer review feedback, &
- Developing your assessment expertise



**Contact:**  
Sarah Oliver, M.Ed.  
Program Manager  
Teaching & Learning Center  
Reinert Alumni Library  
Suite L33 | Office L37  
402.280.3906  
[saraholiver1@creighton.edu](mailto:saraholiver1@creighton.edu)

### eLearning Media & Design provides:

- Strategic design consultation,
- Comprehensive support to faculty and administration in the nine colleges/schools in academic courses,
- Works with all delivery formats: distance, hybrid, & on-campus courses



**Contact:**  
Phil Beagle  
eLearning Media Designer  
Teaching & Learning Center  
Criss III (Suite 155)  
402.280.3055  
[pbeagle@creighton.edu](mailto:pbeagle@creighton.edu)



**Contact:**  
Debbie Ford, Ph.D.  
Associate Vice Provost  
Teaching & Learning Center  
Reinert Alumni Library  
Suite L33 | Office L35  
402.280.2551  
[debraford@creighton.edu](mailto:debraford@creighton.edu)



**Contact regarding Academic Program Review:**  
LuAnn Schwery, MS  
Assistant Dean  
Graduate School  
Eppley B11  
402.280.2772  
[LuAnnSchwery@creighton.edu](mailto:LuAnnSchwery@creighton.edu)

### Instructional Design Team

Collaborates with faculty and provides assistance with applications used for teaching and learning: **BlueLine, BlueCast, Zoom**, and other applications.

- **Contact:** 402.280.3428 or [eLearning@creighton.edu](mailto:eLearning@creighton.edu)
- **Find us at:** Reinert Alumni Library, Suite L22



### Exam Developer Team

Collaborates with faculty and assistance with online proctoring applications: **ExamSoft** and **Examity**

- **Contact:** 402.280.5665 or [exams@creighton.edu](mailto:exams@creighton.edu)
- **Find us at:** Criss III (Suite 155)



MISSION WEEK